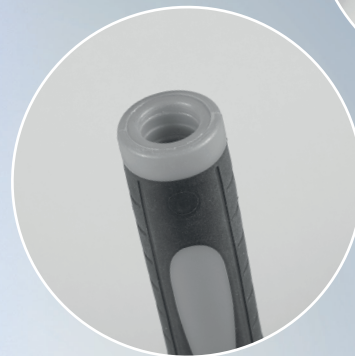
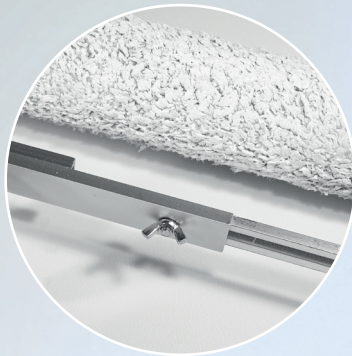
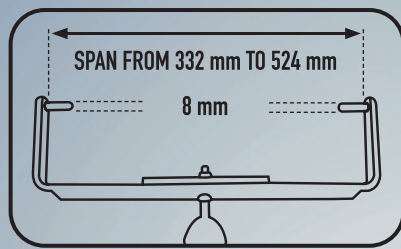


# SAVE YOUR TIME WITH OUR NEW ROLLER FRAME!

**ADJUSTABLE ROLLER FRAME** dedicated to those who paint large surfaces. Its use with the appropriate roller will save you a lot of time. Adjustable arms allow you to use rollers up to 50 cm wide. Ergonomic and comfortable handle is equipped with a thread compatible with most extension poles.



Span adjustment and quick lock by using two wing screws

Compatible with screw-on extension poles

Aluminium and anodised steel construction

Catalog number 030 413

FOR ROLLERS 40 - 50 CM

Compatible with following rollers: Microfiber (030 612) and Nylon (030 014)